

990-0800

AIR-COOLED BEAM DUMP



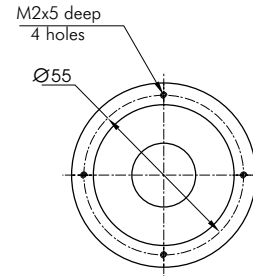
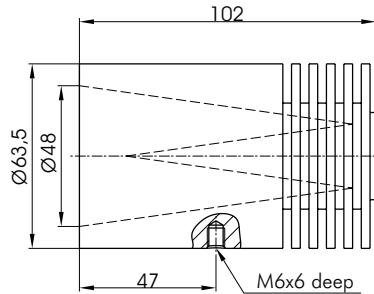
990-0800

Beam Dump 990-0800 is designed to block a CW or a pulsed laser beam. It can be used on beams of up to 50 W in the wavelength range from 0.1 to 30 μm . The design is such, that, even if the non-reflective coating is damaged by high intensity pulses, there's no backward reflection.

SPECIFICATIONS

Wavelength range	0.1-30 μm
Max. Handling power	50 W
Max. Energy	2.5 J (20 Hz)
Acceptance aperture	48 mm (1.89")
Laser type	pulsed, CW

Code	Weight, kg	Price, EUR
990-0800	0.57	169



990-0820

WATER-COOLED BEAM DUMP



990-0820

Beam Dump 990-0820 blocks a CW or a pulsed laser beam. It is mainly intended for beams 2 inch wide.

Water absorbs much energy. So, the dump is best suited for beams of up to 1 kW. The wavelength range is from 0.1 to 30 μm .

Even if the non-reflective coating is damaged by high intensity pulses, the beam is not reflected back into your optical scheme.

The dump mounts on M6 hole on its back.

SPECIFICATIONS

Wavelength range	0.1-30 μm
Max. Handling power	1 kW
Max. Energy	50 J (20 Hz)
Acceptance aperture	48 mm (1.89")
Laser type	pulsed, CW

Code	Weight, kg	Price, EUR
990-0820	1.2	239

